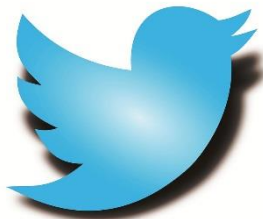


Welcome to Sixth Form Transition Evening



@Imberhorne6th





Glyn Creeves

Head of Sixth Form





Sixth Form Team

Mr Glyn Creeves



Head of Sixth Form

Miss Sinead
McCarthy



Deputy Head of Sixth Form
Futures Leader
(Apprenticeships & Employment)

Mrs Ruth
Warburton



Futures Leader
(UCAS and Early Applicants)



Meet the team

Ms Jacqui Cooper



Pastoral Support
Assistant

Mrs Alison Davies



Sixth Form
Administrator

Mrs Tanya Baker



Library Supervisor
Monday to
Wednesday

Mrs Jacqui Spencer



Library Supervisor
Thursday & Friday

What are we all about?



1. Sixth form within a school
2. High expectations of all
3. All hard workers welcome
4. High levels of pastoral care
5. The right students on the right courses

Well Being

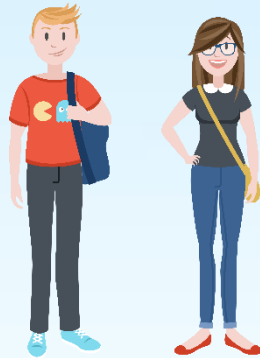
Physical & Mental Health



Well Being

Level 3 courses

Outside Interests



Future Plans

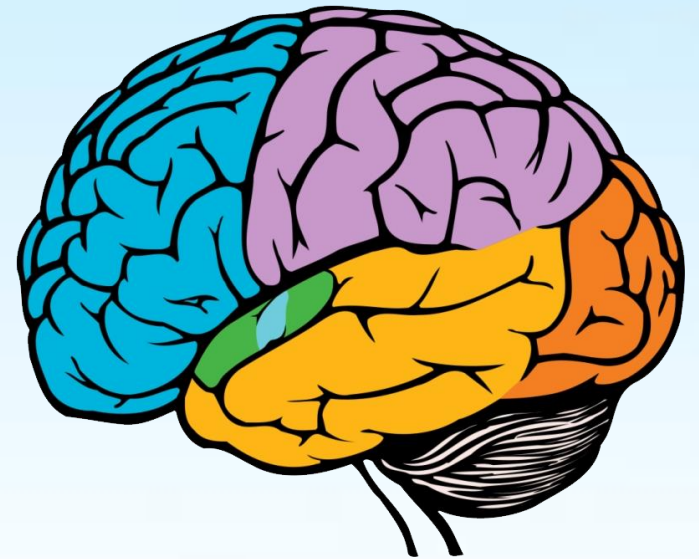
Paid
employment

Social
engagements



Well Being

Mental Health Awareness



Well Being

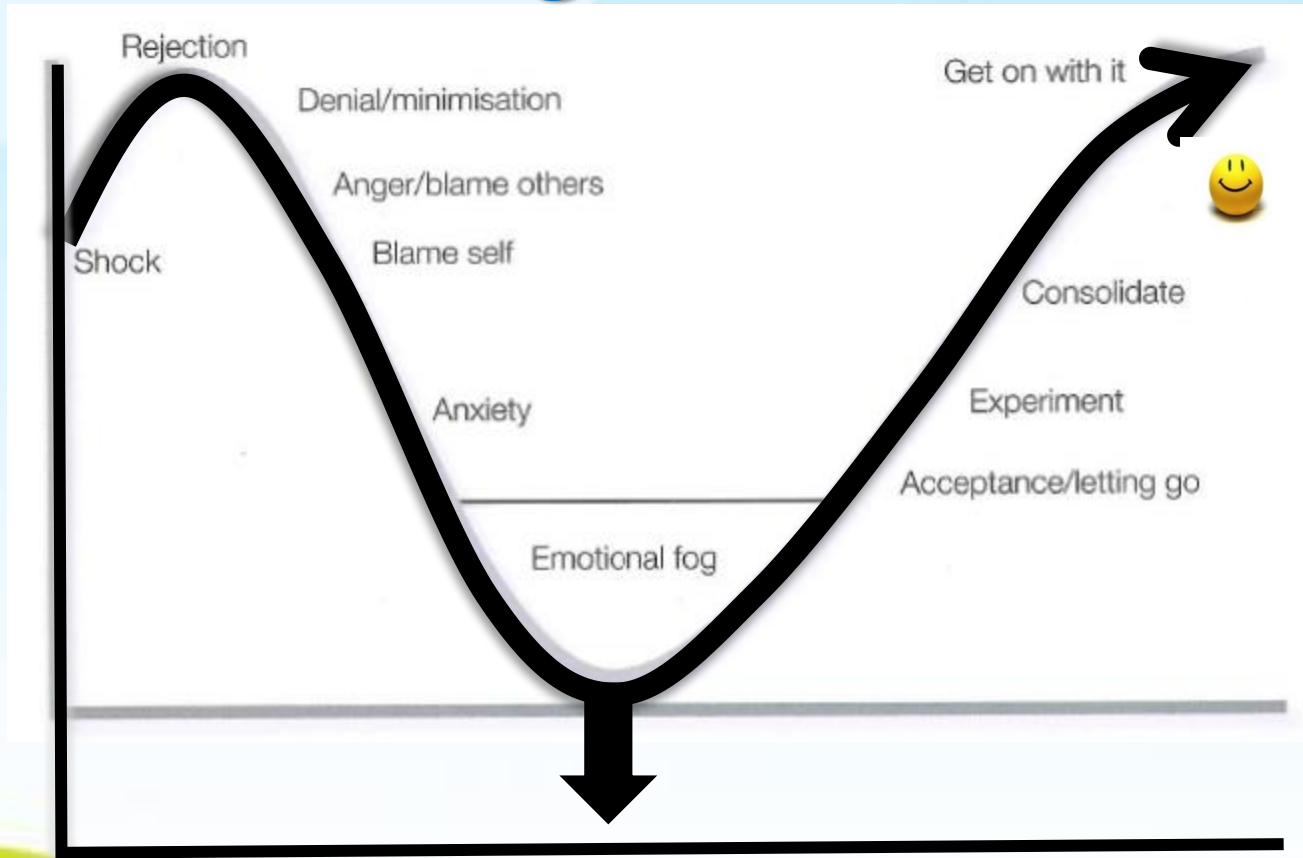


Enrichment Afternoon

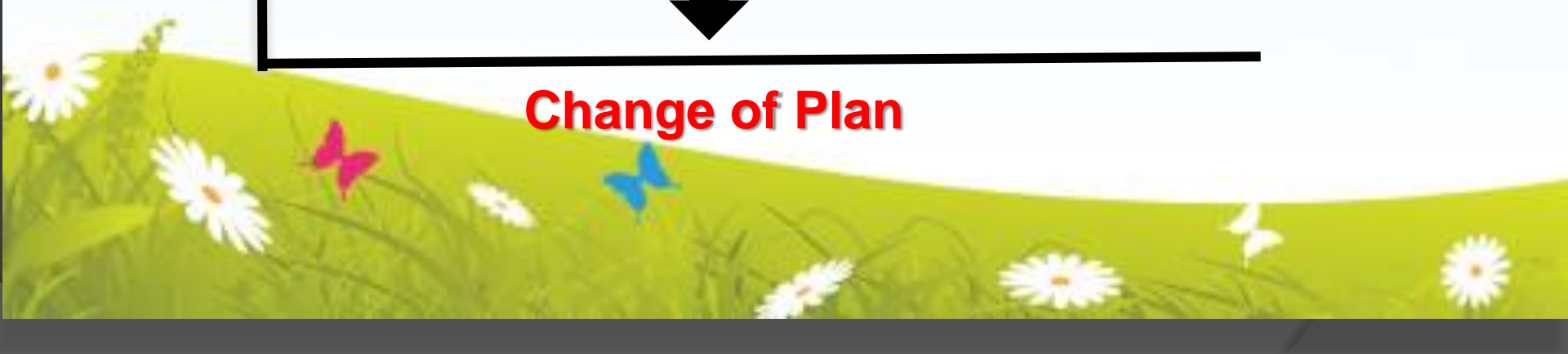
COMMUNITY BASED		SPORT/WELL BEING	LIFE SKILLS
		16 Football Squad/training & fixtures	35 Baking/cooking for beginners
1	External private volunteering	17 Netball squad/training & fixtures	36 Bike Maintenance
2	Halsford Park Primary School	18 Badminton	37 Car Maintenance
3	Felbridge Primary School	19 Basketball	38 Debating
4	Primary school 3 volunteering	20 Couch to 5K club	39 Drama Club
5	Primary school 4 volunteering	21 Dance	40 Film appreciation
6	Primary school 5 volunteering	22 Golf	41 Finance
7	Primary school 6 volunteering	23 Indoor Climbing	42 First aid
8	Care homes	24 Indoor Gym Training	43 Musical Theatre Club
9	Form charities	25 Pilates	44 Self defence
10	Queen Victoria	26 Rounders	45 Sign language
11	Charters Retirement Village	27 Social 6-a-side football	46 Technical Live Events Club
		28 Softball	47 Young Enterprise
12	Elderly support-AGE UK	29 Table tennis	
		30 Tennis	
13	Volunteering for charities	31 Volleyball	
14	KS3/4 class volunteering	32 Walking	
15	KS3 Reading buddies	33 Yoga	
		34 Zumba	



Change Curve



Change of Plan



Leadership





Sinead McCarthy
Deputy Head of Sixth Form



What are we all about?



Academic Courses
&
Qualifications



Pathway 1, 2 and 3



Pathway Options	Academic Entry Requirements	Post-16 courses available
Pathway 1 (1 year)	3 x grade 3s at GCSE	Level 2 BTEC in Business AS Level Photography GCSE Maths and/or English Language <small>(If grade 4's have not yet been achieved in these)</small>
Pathway 2 (2 years)	5 x 9 - 4 GCSE grades mainly at grade 4/5	At least 1 Vocational Level 3 course + 2x A Level and Vocational Level 3 courses GCSE Maths and/or English Language <small>(if grade 4's have not yet been achieved in these)</small>
Pathway 3 (2 years)	7 x 9 – 4 GCSE grades mainly at grade 6 or above + Maths and English Language at Grade 4 or above	Three A Level courses or BTEC Level 3 courses Four A Levels only for exceptional GCSE performance



Timetable Changes from Y11

- Normal Subject Lessons [Teacher + Room] ●
- Personal Development [Mentor time] ●
- Subject Study periods (SSP) ●
- Morning Mentoring ●
- Guided Learning Hours (if <3 subjects)
- Enrichment Activities ●
- 0840-1610 school day possible



Mon, 03/07/2023		Tue, 04/07/2023		Wed, 05/07/2023		Thu, 06/07/2023		Fri, 07/07/2023	
AM	12RWA, 122 <small>RWA</small>	AM	12RWA, 122 <small>RWA</small>	AM	12RWA, 122 <small>RWA</small>	AM		AM	12RWA, 122 <small>RWA</small>
1		1	12C/Pi1, 73 <small>NQU</small>			1	12A/Ch1, 91 <small>SME</small>	1	
2	12D/Pd1, 117 <small>RWA</small>	2	12A/Ch1, 91 <small>GCR</small>	2		2	12A/Ch1, @STU <small>U</small>	2	12C/Pi1, 73 <small>NQU</small>
BR1		BR1		BR1		BR1		BR1	
3	12B/Bi1, @STU <small>U</small>	3		3	12A/Ch1, 91 <small>SME</small>	3	12B/Bi1, 116 <small>KWO</small>	3	
4	12C/Pi1, 73 <small>NQU</small>	4	12B/Bi1, 116 <small>KWO</small>	4	12C/Pi1, @STU <small>U</small>	4	12C/Pi1, 73 <small>NQU</small>	4	12B/Bi1, 116 <small>FWA</small>
LU		LU		LU		LU		LU	
5	12A/Ch1, 91 <small>GCR</small>	5	12B/Bi1, 116 <small>FWA</small>	5	12ab/E61... <small>U</small>	5		5	
6		6		6		6		6	

Timetable Week A (09/07/2023)

Mon, 10/07/2023		Tue, 11/07/2023		Wed, 12/07/2023		Thu, 13/07/2023		Fri, 14/07/2023	
AM	12RWA, 122 <small>RWA</small>	AM	12RWA, 122 <small>RWA</small>	AM	12RWA, 122 <small>RWA</small>	AM		AM	12RWA, 122 <small>RWA</small>
1		1	12C/Pi1, 73 <small>NQU</small>	1		1	12A/Ch1, 91 <small>SME</small>	1	
2		2	12A/Ch1, 91 <small>GCR</small>	2		2	12A/Ch1, @STU <small>U</small>	2	12C/Pi1, 73 <small>NQU</small>
BR1		BR1		BR1		BR1		BR1	
3	12B/Bi1, @STU <small>U</small>	3		3	12A/Ch1, 91 <small>SME</small>	3	12B/Bi1, 116 <small>KWO</small>	3	
4	12C/Pi1, 73 <small>NQU</small>	4	12B/Bi1, 116 <small>KWO</small>	4	12C/Pi1, @STU <small>U</small>	4	12C/Pi1, 73 <small>NQU</small>	4	12B/Bi1, 116 <small>FWA</small>
LU		LU		LU		LU		LU	
5	12A/Ch1, 91 <small>GCR</small>	5	12B/Bi1, 116 <small>FWA</small>	5	12ab/E61... <small>U</small>	5		5	
6		6		6		6		6	



This summer



This Photo by Unknown author is licensed under [CC BY-SA](https://creativecommons.org/licenses/by-sa/4.0/)



Ahead of September Discounted Travel links



Those who pay council
tax to Mid Sussex

Those with SEND status
Click here

All post 16 students
Click here

Those who pay council
tax to Tandridge
Click here

Ahead of September Discounted Travel links



West Sussex County Council

Search [] Q Search

My account Menu

LAST UPDATED: 6 June 2023

Post-16 and college transport for students with SEND

Find out if you can get help with travel costs to college or sixth form.

1. Overview
2. Apply for support
3. If you aren't eligible for help
4. Contact our team
5. Supporting documents
6. Complaints

Also in Apply for transport to school

- > Free school transport
- > Free school transport (by distance)
- > Free school transport (for families on low income)
- > Paid school transport
- > School transport for children with SEND

Overview

You may be eligible to County Council help with transport costs to school, sixth form college or college of further education if you:

- are a student of sixth form age with special educational needs and/or disabilities
- live in West Sussex.

Normally this will mean that you will have an [Education, Health and Care \(EHC\) Plan](#).

The County Council does not normally offer help with transport for Post-16 students who do not have special educational needs and/or disabilities.

For full information, read our [Transport Policy](#).

The contribution for academic year 2023/24 is £770. This can be paid by direct debit over 7 months from October. This is waived for families who are assessed as being on a low income.

SURREY COUNTY COUNCIL

Search site

Home > Schools and learning > Schools > Transport > 16+ transport

Travel assistance to school or college for students aged 16 to 25

Please note, there is no statutory requirement to provide travel assistance for post 16 students. Most students will be able to reasonably access their education or training independently and will not need any support with those arrangements.

However, some students, especially those with special educational needs or disability, may need support with travel arrangements to reasonably access their education or training. We are clear that as young people with special educational needs or disability approach adulthood, where travel assistance is appropriate it will be provided to support the young person's independence.

For full details, please read our [Travel Assistance Policy for learners aged 16 to 25](#).

Check your eligibility

To find out whether you may be eligible for travel assistance, please use our online home to school eligibility checker or read our eligibility guidance below.

[Online eligibility checker](#)

Students aged 16 to 19 years old

Financial contribution

Home > Your Space > Downtime > Travel discounts

OUR SPACE

Are you a young person? Then this site is for you!

LAST UPDATED: 24 May 2023

Travel discounts

Save money on train, bus and coach travel.

Discounts on train travel

- [16-17 Saver](#) - Get 50 per cent off standard Anytime, Off-peak, Advance and Season tickets at any time of the day with the annual card costing £30.00.
- [16-25 Railcard](#) - Save a third off train travel with the annual card costing £30.00.
- [Disabled Persons Railcard](#) - Save a third off train travel for you and a friend with the annual card costing £20.00.
- [Southern Rail Travel Support Card](#) - A free card designed to help you if you find it hard to ask for help when travelling on Southern trains.
- [Southern Rail offers](#) - Check out current offers, including cheap advance tickets and 2-for-1 entry on lots of attractions across Sussex and London.
- [Trainline](#) - Buy cheap advance train tickets and plan your journey.
- [Unizone](#) - A discounted season ticket for college and university students giving unlimited train travel in the Brighton or Worthing areas.

Discounts on bus and coach travel

- [Brighton & Hove](#) - Children and students aged up to 18 get 50 per cent off adult fares with a free Bus ID card.
- [Compass Travel](#) - Student discount of 25 per cent off adult fares. Child discount of 50 per cent off adult fares.
- [Disabled Person's Bus Pass](#) - Free bus travel for eligible disabled people of all ages and their carers.
- [Discovery](#) - One day's unlimited travel on all the main bus services in West Sussex, East Sussex, Surrey, Brighton & Hove and East Hampshire. Simply hop on and off and travel as you please! Available from your bus driver.
- [Metrobus](#) - Student discount of 25 per cent off adult Metrovoyagers, Crawley Metroriders and Horsham Metroriders when using a special key smartcard, which is free to obtain when presenting proof of student status at Crawley Travel Shop. Child discount on area tickets and 50 per cent off adult fares on singles and returns.
- [Plusbus](#) - Unlimited bus travel added to your train ticket from £2.00 a day.
- [Stagecoach Back on Board](#) - half price single and return tickets for jobseekers aged 18 and over who hold a Jobcentre Plus travel card. Apply for a card at your local Jobcentre Plus office.
- [Stagecoach](#) - Discounted Termrider and Unirider tickets for school and college students, plus a weekly student rate Megarider Gold. Child discount of 33 per cent off adult fares.
- [Sussex Coaches](#) - Student discounts available on most services. The discount is not available on N8 or 68 services.
- [Young Person's 16-26 Coachcard](#) - Save a third off standard coach fares with the annual card costing £12.50.

Also in Downtime

- > Duke of Edinburgh's Award West Sussex
- > National Citizen Service (NCS)
- > Drama and music activities
- > Walking, horse riding and cycling
- > Volunteering

Sixth Form Student Dress Code 2023



STUDENT ID CARD AND GREEN LANYARD MUST BE WORN AT ALL TIMES

✓ YES Please

- Tops/T-shirts
- Hoodies/jumpers/sweatshirts
- Dark thick leggings
- Jeans or trousers (one small rip per leg)
- Shorts, skirts or dresses
- Shoes, trainers or sandals



NO Thanks ✗

- Facial piercings
- Low cut tops or short crop tops
- Hoods up on site
- Hats in middle school and lessons
- Underwear on show
- Very short skirts/shorts/dresses
- Beachwear inc rubber flip-flops
- Visible tattoos

The Sixth Form team reserves the right to decide what is suitable.
All decisions are final and we reserve the right to send students home in order to change

X Facial Piercings X



Sixth Form Enrolment 2023

Students need to enrol at one of sessions below



Enrolment Session I — Thursday 24th August 2023 9am-1pm

GCSE Results Day

Or

Enrolment Session II — Friday 25th August 2023 9am-1pm

Or

Enrolment Session III — Monday 4th September 9am-1pm



GCSE Results go not so well?



Sixth Form staff are in school



Enrolment Session I—24th August 2023 9am-1pm **GCSE Results Day**

Or

Enrolment Session II— 25th August 2023 9am-1pm



Start of Term 2023/24

Monday 4th September
Year 12 Enrolment Session III
Last chance to enrol

Tuesday 5th September
(surname A-K) or
Wednesday 6th September
(surname L-Z)
Induction Day
@ Blackland Farm

Thursday 7th September
Students working at home on
Enrolment Tasks
via Google Classroom

Friday 8th September
Enrolment Tasks at home but
Enrolment Assembly 2pm

Monday 11th September
Full timetables begin

Start of Term 2023/24

New Year 12 Student Parent Information Evening

Tuesday 19th September

*16-19 Bursary Fund
applications available here too*

Contact details



Absences & Sixth Form Direct Number: 01342 310986
sixthform@imberhorne.co.uk

Head of Sixth Form
gcreees@imberhorne.co.uk

Deputy Head of Sixth Form
smccarthy@imberhorne.co.uk

Futures Leader (UCAS/Early applicants)
rwarburton@imberhorne.co.uk

Pastoral Support
jcooper2@imberhorne.co.uk