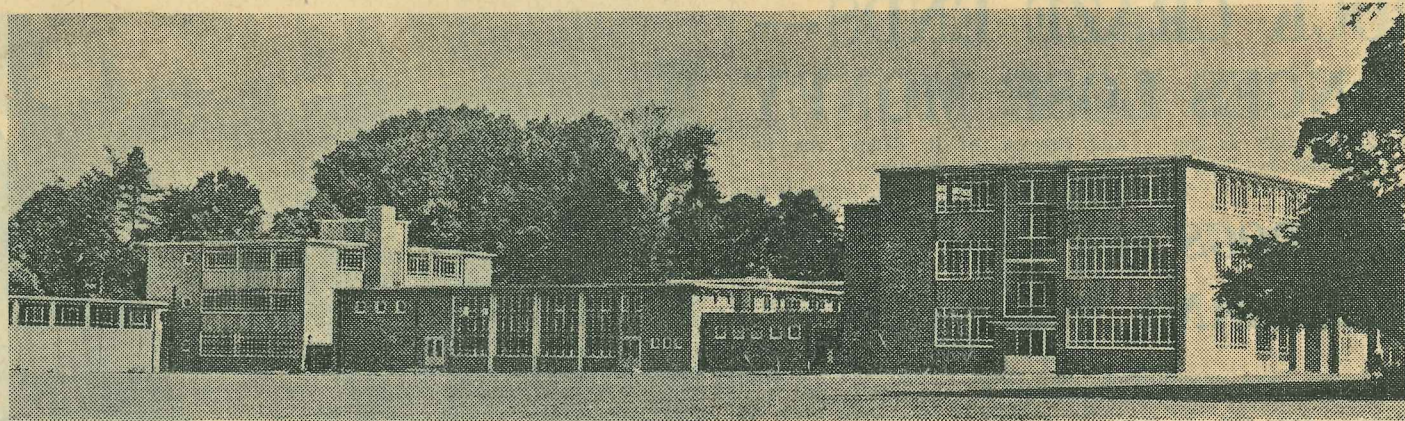


THE FINE NEW SCHOOL AT IMBERHORNE



East Grinstead's newest school, the £300,000 Imberhorne Secondary School, which opens on Wednesday. This is the view over the playing fields that drivers will see from the town by-pass—when it is made

Education—1959 style— comes to our town

ON Wednesday next a new era in education begins in East Grinstead. The new Imberhorne County Secondary School will open wide its glass doors to 627 children—and the town's shortage of school accommodation will be considerably eased.

Children over the age of 11 years in the area north of the railway line between East Grinstead and Forest Row, including Queen's Road, together with those living in the area served by the primary schools of Copthorne, Crawley Down, Turners Hill and West Hoathly, will be drawn to the school.

This will mean that nearly two-thirds of the 800 pupils attending the over-crowded Sackville Secondary School will move to Imberhorne.

East Sussex children at the Surrey schools of Baldwins Hill and Felbridge Primary Schools will also be eligible to attend.

The school is the biggest in the East Grinstead area. With three blocks of classrooms on three floors, it has cost £200,942.

Another £3,615 has been spent on the laying out of its nine acres of playing fields, and a further

£16,000 on equipment and school furniture.

MELLOW BRICKS

Built of mellow Sussex brick around a steel frame, metal windows and cedar weather board, it blends harmoniously with its surroundings.

Contemporary materials, such as continuous durable plastic tops to the bannister rails, and washable glazed plaster walls on the staircases, have been used throughout its construction.

Special roof tiles insulated to keep out the cold in Winter and the heat in Summer, have been used. The floors are covered with hard-wearing thermo-plastic tiles and where a softer surface was needed, linoleum and wood.

Huge windows catch every shred of sunlight, and the feeling is one of space, with no unnecessary duplication.

Open planning is the key-note,

interfere with the pupils during their studies.

TREES RETAINED

To cut costs, wherever possible, concrete and brick finishes have been left. To add to the school's external appearance, clumps and screens of trees and shrubs have been retained.

Showers in changing rooms have been fixed at shoulder height, so as not to wet the hair of pupils during the colder months, and water temperatures are pre-set.

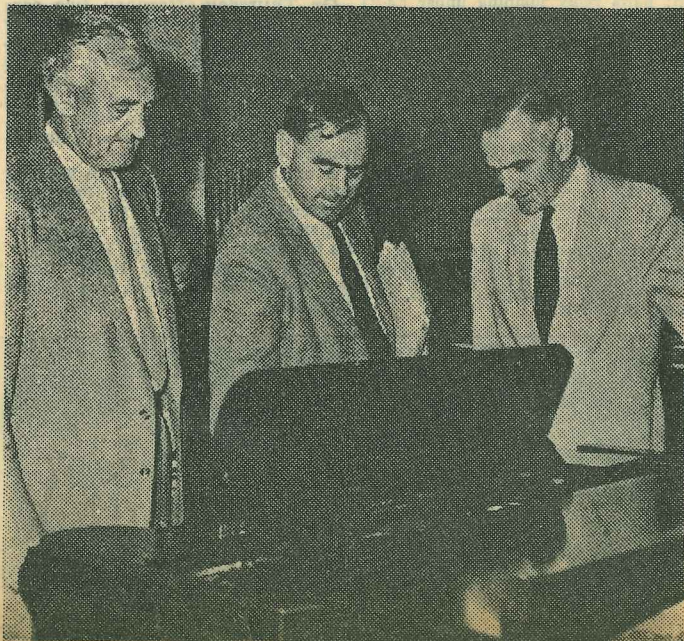
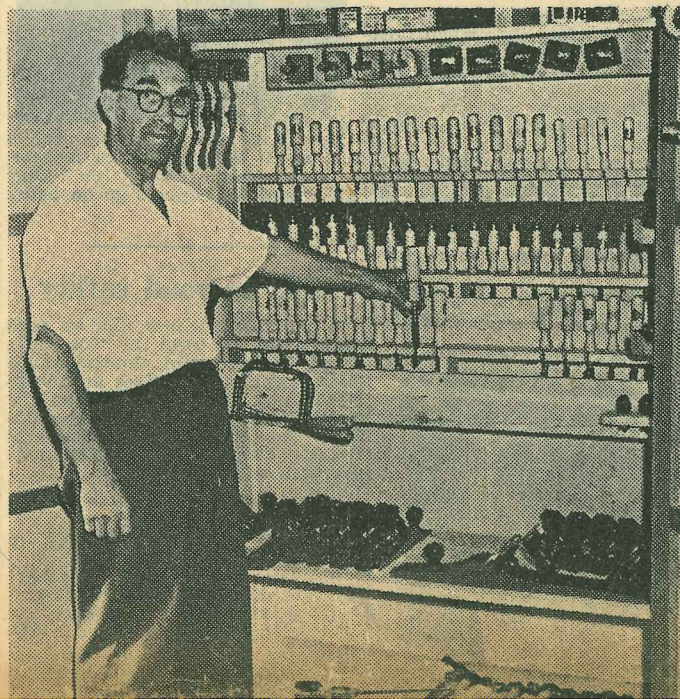
To reduce the noise made when changing classrooms, ceilings above staircases have been fitted with sound-soaking acoustic boards.

Central feature of the school is its large assembly hall with spacious stage, and combined passageway and gallery at the opposite end.

Double sliding doors lead to a general purpose dining area where 228 pupils can eat at one sitting,



Mrs. Janet Coster is the school's already-busy secretary. Apart from the Head's study, there is a separate room for the school's Deputy Head, and another for the use of the evening institute's organising master. A common-room has been provided for the teaching staff, and a "quiet" room in which they can mark pupils' books. A common-room for the evening institute has an adjoining scullery in which hot drinks can be prepared



Left to right: head